




锋特利机械刃模具

FENGTALI MECHANICAL BLADE MOLD



—— 机械刃模具行业首选伙伴 ——

—— Mechanical blade mold industry preferred partner ——



马鞍山市锋特利机械刃模具有限公司
MAANSHAN FENGTALI MECHANICAL BLADE MOLD CO., LTD.

上海公司 电话: 021-51863884
传真: 021-60911015
安徽工厂 电话: 0555-6760112 6760540
传真: 0555-6769221

地址: 马鞍山博望东戴开发区
网址: www.05mj.com QQ: 466921224
邮箱: yanglu2005@163.com

Shanghai Company Tel: 021-51863884
Fax: 021-60911015
Anhui Factory Tel: 0555-6760112 6760540
Fax: 0555-6769221
Add: Maanshan Bowang Dongcheng Development Zone
Website: www.05mj.com QQ: 466921224
Mailbox: yanglu2005@163.com

电话业务 定制 13356568877



Fengteli Mechanical blade mold is a professional production of various kinds of high precision mechanical blade and blade mold of high-tech enterprises. company production base is located in beautiful Frank Maanshan, only 25 km away from the Nanjing Lukou Airport, recently in Nanjing Metro 40 minutes away, the highway 314 runs from east to west, the geographical position is superior and beautiful environment.

After the company dozens of years of continuous efforts, the company has CNC laser cutting, CNC grinding machine, CNC machining center, wire, copying grinding, mirror polishing machine, such as high precision CNC machining equipment, processing all types of round shape, tooth shape and special-shaped cutter, according to customer requirements and selection of tungsten carbide,

Company Profile

公司简介

锋特利机械刃模具是一家专业生产各类高精度机械刀片和刃模具的高新技术企业,公司生产基地座落于美丽的钢城马鞍山,距离南京禄口机场仅25公里,最近的南京地铁40分钟路程,314省道贯穿东西,地理位置优越,环境优美。

经过公司几十年的不断努力,公司拥有数控激光切割,数控磨齿机,数控加工中心,中走丝,仿形砂轮磨床,镜面抛光机等高精度数控加工设备,可加工各类圆形,长形,齿形及异形刀,根据客户要求选用碳化钨、高速钢、合金钢、碳钢及镶制产品来制作各类高精度刀具,并可以特殊要求选用日本、德国、瑞士、美国等牌号材料进行加工,使刀具使用的锋利性和使用寿命上更加出色。

公司的产品用途广泛,民用和工业,无所不在,食品,包装,印刷,造纸,烟草、电子、薄膜、钢铁冶金、电力、造船、皮革、橡胶、纺织机械、文具、塑胶、饲料、纸箱、木工、林业等单位的加工建设,刀片远销欧美和东南亚地区。

公司以客户为中心,致力于开发各类高精度产品,以替代进口产品为己任,为振兴民族工业奋斗,热忱新老客户参观指导!



high speed steel, alloy steel, carbon steel and made products to make all kinds of high precision tool, and special requirements used in Japan, Germany, Switzerland, the United States and other brands of raw material processing, so that the tool use sharp and life better.

The company's products are widely used in civil and industrial, food, packaging, printing, paper, tobacco, electronics, film, iron and steel metallurgy, electric power, shipbuilding, leather, rubber, textile machinery, stationery, plastic, feed, paper, forestry and other units, the blades are exported to Europe, America and Southeast Asia.

Company to customers as the center, is committed to the development of all kinds of high precision products, to replace imported products as their responsibility, to revitalize the national industrial struggle, dedicated to new and old customers to visit the guidance!

Production equipment 生产设备



锋特利机械刀具已深入到制造加工业的很多领域，“锋特利”更将创造出值得客户信赖的品牌，作为最大的机械刀具制造专业厂家之一，锋特利一直致力于机械刀具的研制，不仅生产国内领先的机械刀具产品，还具备引领业界的先进技术。

本公司拥有一批经验丰富的技术精英和各项精密检测仪器及安全化设备，我们紧跟国际技术发展趋势，以“持续改进、力求完美、追求客户满意”为方针的质量管理体系，使公司的质量管理工作在各方面日趋完美。

Fengte Machine Tooling Company has penetrated into many areas of manufacturing and processing industries. "Fengte" is more worthy of the trust will create brand as one of the largest professional manufacturers of machine tool manufacturing, machine tool Feng Terry has been committed research, not only produces a leading machine tool products, but also to lead the industry with advanced technologies.

The company has a group of experienced technical elite and the sophisticated detection equipment and a full set of equipment, we closely follow the development trend of international technology, to "continuous improvement, strive for perfection, the pursuit of customer satisfaction" approach to quality management system, the company quality management in all aspects of becoming perfect.



EXHIBITION AND 展会及部分海外客户 SOME OVERSEAS CUSTOMERS



Quality assurance 品质保证



1、选料(针对客户要求的韧性及耐磨性选用相应的材料)

The choice of materials (for toughness and wear resistance required by customers choose the appropriate material)

产品的化学成份，具备优质而科学的控制曲线，除了常规元素之外，加入了适量的贵重金属元素。为快速准确地检测和调整化学成份，公司在化验设备上投入了大量的资金，以保证产品所需的目标值。

Chemical composition of product, high quality and scientific control curve, in addition to conventional elements, joined the amount of precious and rare element. For the fast and accurate detection and adjustment of chemical composition, the company has invested large amounts of funds in the laboratory equipment, to ensure that the product of the desired target value.



2、锻造/Forging

通过锻造能消除金属在冶炼过程中产生的铸态疏松等缺陷，优化微观组织结构，同时由于保存了完整的金属流线，锻件的机械性能一般优于同样材料的铸件。机械中负载高、工作条件严峻的重要零件，除形状较简单的可用轧制的板材、型材或焊接件外，多采用锻件。

Produced by forging the metal can be eliminated in the process of smelting cast defects such as osteoporosis, microstructure optimization, and because the metal to save a complete flow line, generally superior mechanical properties of forgings castings of the same material. Mechanical load is high, an important part grim working conditions, in addition to simple shapes available rolled sheet, profiles or welded parts, the use of forgings.



3、先进的热处理工艺/Advanced heat treatment process

热处理工艺是保证和提高产品质量的非常重要的工序，良好的切削质量，只有通过先进的热处理设备和热处理工艺，才能得到充分的体现。

公司拥有先进的热处理设备，从而保证工件在特定时间和工艺范围内按照所要求的基体组织标准进行转化，达到极大的统一。

Heat treatment process is very important to ensure and improve the process of product quality, good cutting quality, only through advanced heat treatment equipment and heat treatment process, in order to be fully reflected.

The company has advanced heat treatment equipment, thus ensuring the workpiece within a certain range of time and process transformation matrix organization in accordance with the standards required to achieve the great unity.



4、机加工/Machining

随着对金属材料加工精度要求的不断提高,我们发展了超高精度的裁切刀具,精度至今只有精密铣削刀具能与之相匹配。±0.002mm厚度公差和Ra0.1 μm表面粗糙度,已是我们的常规标准。运用我们的技术诀窍和专业知识,还可满足客户对厚度、平行度、平面度、外圆和内圆等更高的公差要求。我们如今已能保证厚度公差达±0.002mm对一定的内圆,其公差可达到H3。所有高精度产品的检查都是在恒温室内进行的。

With precision sheet metal processing requirements continue to increase, we have developed an ultra-high-precision cutting tools, precision milling tool accuracy has only been able to match. ±0.002mm thickness tolerances, surface roughness and Ra0.1 μm, is our regular standards. Use our technology and expertise tactics to steel, but also to meet customer thickness, parallelism, flatness, outer and inner circles, such as a higher tolerance requirements, we now have been able to ensure that the thickness tolerances up to ±0.002mm for certain inner circle, their tolerance can be achieved H3. Check all precision products are carried out in a heated indoor.

| 产品规格 Product specification | 厚度公差 Thickness tolerance | 平行度公差 Parallelism tolerance | 内圆公差/Inner circle error | | | | | 外圆公差/Outer circle error | | |
|----------------------------------|--------------------------------|-----------------------------------|-------------------------|-------|-------|-------|-------|-------------------------|--------------------|-----------------|
| | | | <1 | 1~<2 | 2~<3 | 3~<5 | 5~<10 | >10 | 平行度 Parallelism | 圆度 Roundness |
| 3.00 | ±0.005 | 0.02 | 0.01 | 0.015 | 0.02 | 0.025 | 0.03 | 0.035 | 0.04 | 0.045 |
| 3.00-3.50 | ±0.005 | 0.02 | 0.01 | 0.015 | 0.02 | 0.025 | 0.03 | 0.035 | 0.04 | 0.045 |
| 3.50-4.00 | ±0.005 | 0.02 | 0.015 | 0.02 | 0.025 | 0.03 | 0.035 | 0.04 | 0.045 | 0.05 |
| 4.00-4.50 | ±0.005 | 0.02 | 0.02 | 0.025 | 0.03 | 0.035 | 0.04 | 0.045 | 0.05 | 0.055 |
| 4.50-5.00 | ±0.005 | 0.02 | 0.025 | 0.03 | 0.035 | 0.04 | 0.045 | 0.05 | 0.055 | 0.06 |



分切机械用刀/Armed with a knife cutting machine



◆分切刀片主要用于纸张、薄膜、金、铝箔、铝箔、铜箔、磁带等物品的分切，要求刀片切断阻力最小，耐磨损性最大。出于对商品精度的要求刀具有时须达到微米级精度。选料：9CrSi、Cr12mov、w6mo5cr4v2、w18cr4v等。

◆Cutting blade is mainly used for cutting paper, film, gold, silver foil, aluminum foil, copper foil, tape and other items requiring a minimum blade cut resistance, abrasion resistance Max. Cut of merchandise subject to the requirements of precision cutting tools sometimes achieve micron-level precision. Choice of materials: 9CrSi, Cr12mov, w6mo5cr4v2, w18cr4v so on.



01. 锋特利制刀 销售热线: 0555-6760112/6760540 传真: 0555-6760221

切管机械用刀/Pipe Cutting Machine Knives



◆这是主要用在制管生产线上的刀具，和所制管（含纸管、铜管、铝管、钢管等）速度同步移动，在沿着管子的外周旋转的同时，慢慢向中心切入，把管子切断。选料：9crsi、cr12mov(skd11)、w6mo5cr4v2(skh)、w18cr4v等。

◆It is mainly used in pipe production line tool, and the pipe (including paper tubes, brass, aluminum, steel, etc.) speed synchronization moves along the outer periphery of the tube while rotating slowly cut the central portion, cut the tube. Choice of materials: 9CrSi, cr12mov (skd11), w6mo5cr4v2 (skh), w18cr4v like.



TEL: 0555-6760112/6760540 FAX: 0555-6760221 **Fengteli Blade . 02**

轮胎修剪刀片系列/Tire cutting blade series



◆轮胎修剪刀片主要采用Cr12MoV1、HSS等优质工具钢和钨合金制造。切口光滑平整，刃口耐磨损。其产品胶垢附着度低，其特有的高耐磨性、耐热性、高强度、高切削性等综合性能均优于其他同类产品。用于切除轮胎硫化后表面存留的排气胶柱。采用优质钢材，经热处理后刃口锋利，耐磨性强，使用寿命长，是橡胶行业切割产品的最理想工具。

◆Tire cutting blade used mainly Cr12MoV1, HSS and other quality steel and tungsten alloy tool. Incision smooth, edge wear. The scale adhered plastic products with low degrees of its unique combination of high wear resistance, heat resistance, high strength, high cutting resistance are better than other similar products. After removal of the surface for the lifetime of the tire curing exhaust gas column. High quality steel, sharp blade after heat treatment, wear resistance and long service life. Rubber industry is the ideal tool for cutting products.

03. 锋特利制刀 销售热线: 0555-6760112/6760540 传真: 0555-6760221

橡胶圆刀系列/Rubber round knife series

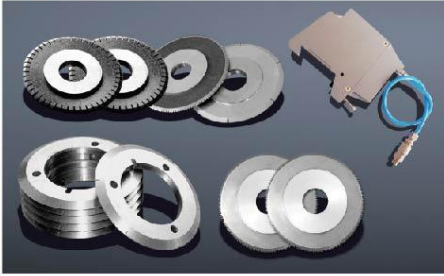


◆橡胶机械刀片一般为异型刀片和圆盘刀片，主要有各种齿形平圆刀及条形刀。刀口锋利、耐磨损、硬度适宜，切削帘子布、塑料件、无纺布尤其适宜。

◆Rubber machinery blades and more generally for the disk-shaped blade and the blade, there are a variety of tooth flat circular knife and strip knife. Sharp knife, wear resistance, hardness, suitable for cutting cord, plastic parts, non woven especially suitable.

TEL: 0555-6760112/6760540 FAX: 0555-6760221 **Fengteli Blade . 04**

气动刀架 刀片系列/ Pneumatic knife blade series



◆这是用于打孔和虚线切割等作业的条形、圆形刀片，以及折页机刀片，封切刀片等。选料：9CrSi、Cr12MoV、W6Mo5Cr4V2、W18Cr4V等。
 ◆近年来我公司根据国内从台湾、意大利、美国进口卷筒卫生纸长卷的不同特点，分别研制生产出切断大园刀具有较高的耐磨性、防锈性、再配备本公司自行研制的砂轮，能达到更高的精度，从而切出的纸卷无毛边、无锈痕、无发黑现象、复卷机配套的整体长条打孔定刀和飞刀，具有合理的耐磨性，定刀采用数控机床开齿，飞刀平行度公差在0.01mm之间，从而保证了打出孔的准均度。
 ◆It is used to strip, and dashed circular blade cutting operations such as drilling, as well as folding blades, sealing and cutting blade. Choice of materials: 9CrSi, Cr12MoV, W6Mo5Cr4V2, W18Cr4V so on.
 ◆In recent years, our company based on domestic and imported from Taiwan, Italy, the United States saw a long roll of toilet paper the different characteristics, namely the development and production of cutting large garden tool has a higher wear resistance, corrosion resistance, and then with the company's own research the wheel can achieve higher accuracy, thus cutting out the roll no edges, no saw marks, no black phenomenon, Winder supporting the overall long punch knives and knife set, with reasonable wear, scheduled to open tooth knife used CNC machine tools, knife and parallelism tolerance between 0.01mm, thus ensuring the quasi-hole play both degrees.

切捆条布园刀片/ Park blade cut bundles of cloth

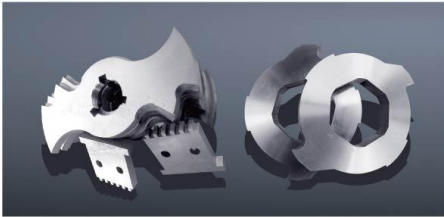


| 品名 Name | 规格 Specification | 外径Φ (D1) | 内径Φ (D2) | 厚度 Thickness | 材料 Material |
|------------|---------------------|-------------|-------------|-----------------|--|
| ◆ | 200×25.4×2.5 | 200 | 25.4 | 2.5 | 9CrSi, Cr12MoV(SKD11), W6Mo5Cr4V2(SKH), W18Cr4V等。 |
| ◆ | 200×25.4×2 | 200 | 55 | 2 | |
| ◆ | 200×25.4×3 | 200 | 25.4 | 3 | |
| ◆ | 250×25×1.8 | 250 | 25 | 1.8 | |
| ◆ | 250×25.4×2.5 | 250 | 25.4 | 2.5 | |
| ◆ | 250×25.4×3 | 250 | 25.4 | 3 | |
| ◆ | 280×25×1.8 | 280 | 25 | 1.8 | |
| ◆ | 300×25.4×2.5 | 300 | 25.4 | 2.5 | |
| ◆ | 300×25.4×3 | 300 | 25.4 | 3 | |
| ◆ | 300×32×3 | 300 | 32 | 3 | |
| ◆ | 300×38.1×3 | 300 | 38.1 | 3 | |
| ◆ | 350×25.4×2.5 | 350 | 25 | 2.5 | |
| ◆ | 350×32×2.8/3 | 350 | 32 | 3 | |
| ◆ | 350×40×3 | 350 | 40 | 3 | |
| ◆ | 350×50×3 | 350 | 50 | 3 | |
| ◆ | 380×25.4×3 | 380 | 25.4 | 3/4 | |
| ◆ | 380×40×3/4 | 380 | 40 | 3/4 | |
| ◆ | 400×25.4×3/4 | 400 | 25.4 | 3/4 | |
| ◆ | 400×58.8×3/4 | 400 | 58 | 3/4 | |
| ◆ | 400×80×3/4 | 400 | 80 | 3/4 | |
| ◆ | 450×25.4×3/5 | 450 | 25.4 | 3/5 | |
| ◆ | 610×68.3×4.76 | 610 | 68.3 | 4.76 | |
| ◆ | 450×25.4×3 | 450 | 25.4 | 3 | |

◆我公司的刀片适用切割各种布类、无纺布、帐篷、雨伞、油棉、皮革、塑胶等材料，刀片的平行度在0.05mm以内，保证刀片旋转时不偏心，切出来的产品平整，无毛边。
 ◆Our company apply the cutting blade kinds of cloth, non-woven, tents, umbrellas, foam, leather, plastic and other materials, parallel blades within 0.05mm, ensure the blade rotation is not eccentric, cut out of the product formation, burr.

以上为我公司部分切片刀产品规格尺寸，特殊规格可来图加工定做。欢迎新老客户来电、来函、来函定购。
 The above is my part of the company cutting blade product size specifications, special specifications can be to design custom processing. Welcome to the new and old customers call, letter, plans to order.

切料机 撕碎机用刀/ Granulator shredder knife



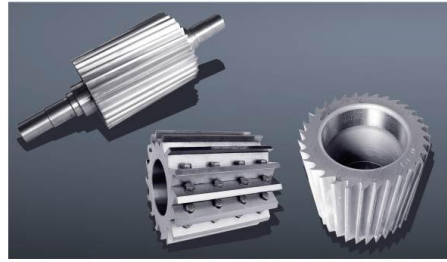
撕碎机刀/Shredder knife

◆本公司使用优质的材料，如SKD11及钨钴钢来制作刀具，主要有：破碎刀、粉碎机2爪刀、3爪刀、螺旋滚刀、高低速粉碎机刀及异型杂难高精度刀具，其中慢速粉碎机刀产品已形成本体系销往世界各地。
 ◆规格主要有：φ 200 32齿、φ 180 32齿、φ 150 22齿、φ 140 18齿等。



粉碎机刀片/Grinder blade

◆The company uses high-quality materials such as SKD11 and inlay tungsten steel to produce tools, are: broken knife, claw knife grinder 2, 3 claw knife, spiral hob, low-speed shredder knives and miscellaneous difficult Shaped precision tools, slow knife grinder which has formed a system sold worldwide.
 ◆Specifications are: φ 200 32 teeth, φ 180 32 teeth, φ 150 22 teeth, φ 140 18 teeth and so on.



切料机连轴旋转刀/Even shaft granulator knives

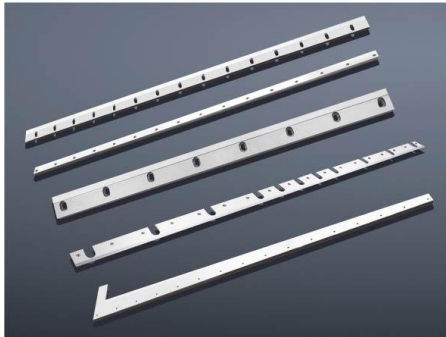


60型镶合金滚刀
60 type inlay alloy hob



饲料粉碎机刀片
Forage crusher blade

镶高速钢 钨钢封切刀 横切刀
 With the high-speed steel tungsten steel sealing cutter cutting knife



- ◆ 电子线路板行业用，分切各类纸张、胶带、薄膜用刀；
- ◆ 铜铝泊切刀、切钢片剪刀、线路板裁切刀等；
- ◆ 材质：镶高速钢SKH-51 SKH-9 镶钨钢YG9 YG15。
- ◆ Electronic circuit board industry with all paper film and belt cutter;
- ◆ Copper and aluminum mooring cutter, cut steel scissors, knives and other cutting board;
- ◆ Material: HSS inserts SKH-51 SKH-9 inlay tungsten steel YG9 YG15.



09. 锋特利制刀 销售热线: 0555-6760112 / 6760540 传真: 0555-6769221

全钨钢 镶钨钢刀片-圆刀/Carbide inserts tungsten steel blades-Round knife



合金三孔刀
Three-hole alloy knife



化纤、陶瓷加工用钨钢刀
Fiber, ceramic machining tungsten steel



铜、塑胶、玻璃产品加工使用钨钢圆刀
Copper, plastic, glass products processing tungsten steel circular knives



钨钢薄片刀、化纤刀系列
Tungsten steel foil cutter, fiber cutter series



烟机刀
Hood knife



纸、布料、线路板加工行业用钨钢圆刀
Paper, cloth, circuit board processing tungsten steel circular knives



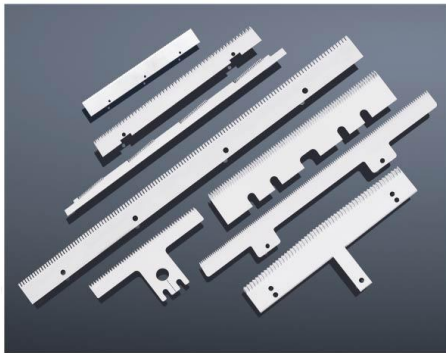
玻璃、卷烟、薄荷等加工使用钨钢圆刀
Glass, cigarette, film and other processing using tungsten steel circular knives



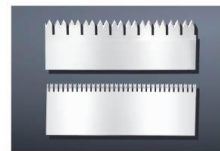
电池隔膜刀
Battery separator knife

TEL: 0555-6760112 / 6760540 FAX: 0555-6769221 **Fengteli Blade . 10**

食品包装齿形刀片 / Food Packaging toothed blade



- ◆ 本公司精制各种齿刀系列产品，品质优良，平直度特优。把被加工物品切成带状时使用，它们也可根据形状、尺寸的不同而多种多样。
- ◆ 材质：65MNSK-5\SUS-440C\420-J2\SKD-11\SKH，根据需要选用。
- ◆ 主要用途：制袋机用刀具、封箱机用刀具、胶带用刀具、旋转印刷机用刀具、糖果包装机用刀具、珍珠棉裁断机刀具、塑料纸张分切用刀具及各类包装机用刀具等。
- ◆ The company refined variety of cutter products, excellent quality, flatness privileged. When the strip is cut using the processing items, they may be based on different shapes, sizes and varied.
- ◆ Material: 65MNSK-5\SUS-440C\420-J2\SKD-11\SKH, according to need.
- ◆ Main purpose: Making machine tools, sealing machine tools, plastic knives, rotary presses with knives, Candy packaging machine knives, EPE cutting machine knives, plastic paper cutting knives and all kinds of packaging machine tool.



11. 锋特利制刀 销售热线: 0555-6760112 / 6760540 传真: 0555-6769221

TEL: 0555-6760112 / 6760540 FAX: 0555-6769221 **Fengteli Blade . 12**

塑料破碎机用刀片/Plastic crusher blade



- ◆材质: W-109(SK-5)全钢 (国内牌号T10 9CrSi Cr12MoV)
D-2(SKD-11)全钢、镶钢
M-2(SKH-51)全钢、镶钢
T.C.T. 全钢、镶钢
- ◆用途: 适用于粉碎塑胶、橡胶、纸类、木材、食物、矿物、轮胎、PET、POM、BOPP、APS等。
- ◆特色: TCT、M-2 (SKH-51)、D-2(SKD-11) 使用镶钢原因是刀片具有高品质、高硬度、低成本等特性, 适用于粉碎塑胶和橡胶制品。刀片的规格可依顾客的需求制作。
- ◆Material: W-109 (SK-5) steel (domestic brands T10 9CrSi Cr12MoV)
D-2 (SKD-11) steel, inlaid steel
M-2 (SKH-51) steel, inlaid steel
T.C.T. steel, inlaid steel
- ◆Uses: Suitable for crushing plastic, rubber, paper, wood, food, minerals, tires, PET, POM, BOPP, APS, etc.
- ◆Features: TCT, M-2 (SKH-51), D-2 (SKD-11) because of the use of inlaid steel blade with high quality, high hardness, low cost and other characteristics, suitable for crushing plastic and rubber products. Blade specifications can be made to customer needs.

13. 锋特利制刀 销售热线: 0555-6760112/6760540 传真: 0555-6769221

瓦楞纸箱行业用刀/Corrugated box industry with a knife



- ◆瓦楞纸箱造纸行业: 钨钢纵切圆刀, 整体镶钨钢长刀, 瓦楞纸切刀。
- ◆外圆Φ20到Φ350的各类硬质合金分切圆刀, 应用于石棉瓦分切, 加工电子线路板, 造纸印刷, 橡胶, 塑料薄膜, 烟草, 纺织, 有色金属分切等多个行业。
- ◆Corrugated paper industry: tungsten steel slitting circular knives, long knives overall inlay tungsten steel, corrugated cutter.
- ◆External Φ20 to Φ350 of all types of carbide cutting round knife, used asbestos slitting, many industries and processing of electronic circuit boards, paper and printing, rubber, plastic film, tobacco, textiles, non-ferrous metal cutting and so on.



TEL: 0555-6760112/6760540 FAX: 0555-6769221 **Fengteli Blade** . 14

印刷折页机虚线刀片/Printing dashed blade folding machine



- ◆用于heidelberg、SHOEI Stahl MBO、北人、上海聚宏、湖南新部和胜利伟业等折页机刀虚线打刀刀具。常用规格62*40*0.5 48*30*0.5 齿形U型 V型 斜V 齿数8 12 14 16 18 20 22 24 28 32 等, 可以非标加工订做。
- ◆各种型号、规格折页机的界刀、针线刀、通刀、压痕刀、开边刀。
- ◆For heidelberg, SHOEI Stahl MBO, North Shanghai, Hunan, the zibaishan macro Xinshao and Shengli Weiye, folding machine knife dashed perforating tool. Common specifications 62*40*0.5 48*30*0.5 profile U type and V type cable V leath number 8 12 14 16 18 20 22 24 28 32 and so on, can be customized non-standard processing.
- ◆Various models, specifications Cutter folding machine, sewing knives, knife through indentation knife, open the knife edge.

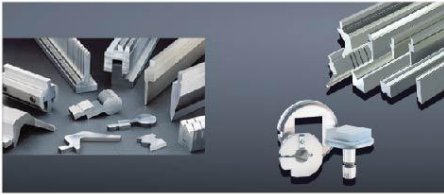
刀片尺寸:

| | |
|--|--|
| 界刀(Cutter) | Φ68X50 |
| V型4齿、6齿、8齿、10齿、12齿、15齿、16齿、18齿、24齿界刀 (V-4 leath, looth 6, 8 leath, 10 leath, 12 leath, 15 leath, 16 leath, 18 leath, 24 leath Cutter) | Φ62X40 |
| V型4齿、6齿、8齿、10齿、12齿、15齿、16齿、18齿、24齿、30齿、36齿 界刀 (V-4 leath, looth 6, 8 leath, 10 leath, 12 leath, 15 leath, 16 leath, 18 leath, 24 leath, 30 leath, 36 leath Cutter) | Φ58X40 |
| V型4齿、6齿、8齿、10齿、12齿、15齿、16齿、18齿、24齿 界刀 (V-4 leath, looth 6, 8 leath, 10 leath, 12 leath, 15 leath, 16 leath, 18 leath, 24 leath, Cutter) | Φ52X32 Φ48X30 Φ62X40 |
| U型4齿、6齿、8齿、10齿、12齿、15齿、16齿、18齿、24齿 界刀 (U-4 leath, looth 6, 8 leath, 10 leath, 12 leath, 15 leath, 16 leath, 18 leath, 24 leath, Cutter) | Φ58X40 |
| U型4齿、6齿、8齿、10齿、12齿、15齿、16齿、18齿、24齿 界刀 (U-4 leath, looth 6, 8 leath, 10 leath, 12 leath, 15 leath, 16 leath, 18 leath, 24 leath, Cutter) | Φ52X32 Φ48X30 |
| U型4齿、6齿、8齿、10齿、12齿、15齿、16齿、18齿、24齿 通刀 (U-4 leath, looth 6, 8 leath, 10 leath, 12 leath, pass the knife) | Φ68X50 Φ62X40、 Φ58X40、Φ52X32、 Φ48X30 |
| 压痕刀 (Creasing knife) | Φ68X50 Φ62X40、 Φ58X40、Φ52X32、 Φ48X30 |
| 针线刀 (Needle knife) | Φ62X40 |
| U型90齿、80齿开边刀 (U-60 leath, 80 leath open knife edge) | Φ52X32 |
| V型 4齿、6齿、8齿、10齿、开边刀 (V-4 leath, looth 6, 8 leath, 10 leath, open knife edge) | Φ48X30 |
| V型 4齿、6齿、8齿、10齿、特殊规格可定制。价格优惠起定量少。 (V-4 leath, looth 6, 8 leath, 10 leath, special specifications can also be customized. Price from less quantitative.) | |

17. 锋特利制刀 销售热线: 0555-6760112/6760540 传真: 0555-6769221

TEL: 0555-6760112/6760540 FAX: 0555-6769221 **Fengteli Blade** . 18

折弯机模具 / Bending machine dies



- ◆我们对数控折弯机模具、灯杆、钢杆、折弯形成圆模、多角度模具等提供专业化生产，另外，本公司还可以根据客户的要求，选择最佳的模具设计方案，以最快的时间，最好的品质满足客户的要求。
- ◆我们还可以提供特殊用途的模具，为客户提供长度6米以内的折弯机模具；有弯头模、刀形模、90°、60°、45°、30°、R形、圆柱形、U型和折弯压印模、集装箱专用模、各种灯杆模、剪板机刀片、来图加工、非标设计等。
- ◆Our CNC bending machine dies, poles, steel, bent to form a round mold, mold and other multi-angle provides specialized production, in addition, the company also according to different requirements of customers, choose the best mold design, with the fastest time, best quality to meet customer requirements.
- ◆We can also provide mold special purpose, to provide customers with the length of the bending machine die within six meters; elbow die, knife-shaped mold, 90°, 60°, 45°, 30°, R-shaped, cylindrical, u-and bending pressure die, container mold, mold all kinds of poles, shearing blades, to map processing, non-standard design.

19. 锋特利制刀 销售热线: 0555-6760112/6760540 传真: 0555-6769221

纵剪分条刀片 / Slitting blades

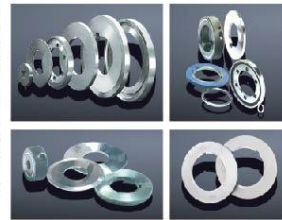
◆圆盘剪刀片主要采用Ti0、6CrW2S、Cr12MoV、LD、H13、H3K、W18Cr4V等优质工具钢和高合金模具钢制造，切口光滑平整、刃口锋利耐磨损。主要用于板材纵剪分条及各类纵剪机组，我公司可生产直径1.2米以内的各类圆剪刀片以及直径0.5米以内的超高精度圆剪刀片，平行度可达0.002mm。



◆Disc scissor blade used mainly Ti0, 6CrW2S, Cr12MoV, LD, H13, H3K, W18Cr4V other high-quality tool steel and high-alloy tool steel manufacturing, cut smooth, sharp edge wear. Mainly used for all kinds of sheet slitting and slitting unit, our company can produce all kinds of round scissor blade diameter of less than 1.2 meters and a diameter of ultra-precision scissors piece 0.5 meters within a circle, the parallelism of up to 0.002mm.

纵剪机刀片 / Slitting blades

◆随着对金属板材加工精度要求的不断提高，我们发展了超高精度的切割工具，其精度至今只有精密铣削刀具才能与之相匹配。±0.001mm厚度公差，和Ra0.1μm表面粗糙度已是我们的常规标准。运用我们的技术诀窍和专业知识，还可以满足客户对厚度、平行度、平面度、外圆和内圆等更高的公差要求。



◆With precision sheet metal processing requirements continue to increase, we have developed an ultra-high-precision cutting tools, precision precision milling tool has only to match. ±0.001mm thickness tolerances, surface roughness and Ra0.1μm is our conventional standards. Use our technical know-how and expertise, but also to meet customer demands for higher tolerances thickness, parallelism, flatness, external and internal requirements.

TEL: 0555-6760112/6760540 FAX: 0555-6769221 Fengteli Blade . 20

T型齿刀规格尺寸 / T-type cutter Size



21. 锋特利制刀 销售热线: 0555-6760112/6760540 传真: 0555-6769221

虚线齿刀 / Dotted line cutter



◆我公司精制的适用于立式包装机刀片配套于国内各知名企业，可以切割各类食品包装袋，刀片材料选用SK5/440C/SKD11/SKH-9等以适合不同档次的用户，国内领先的全自动数控磨床加工磨齿，使切割的产品切口平整，无毛刺，标准产品常年配有现货，非标产品按图纸加工。

◆用于切割虚线的长齿超薄刀片，可切割各类超市手撕袋，纸袋和无纺布袋，切出来的产品易撕不粘，并能良好的保持袋制品的密封性，是各大制袋厂家的首选刀具。常用虚线规格2.5*0.5、3*1、5*2等。

◆Our company refined for vertical packaging machine blade supporting the domestic well-known enterprises, can cut various types of food packaging bags, such as blade material selection SK5/440C/SKD11/SKH-9 to suit users of different grades, leading automatic CNC machining mill grinding teeth, make the cut product incision formation, no glitches, perennial with standard products in stock, non-standard products according to drawings.

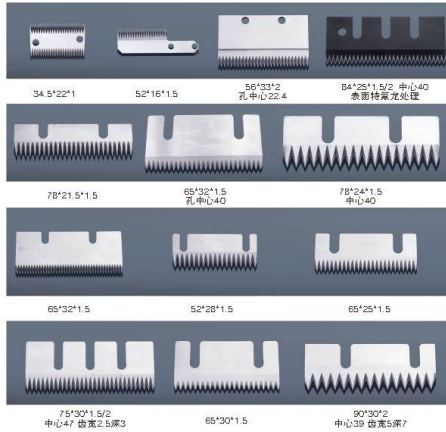
◆Slim long tooth blade for cutting the dotted line, you can cut all kinds of supermarkets Shredded bags, paper bags and woven bags, cut out the product easy to tear stick, and can maintain good sealing bags products are all first, a large tool bag manufacturers. Common dashed specification 2.5 * 0.5, 3 * 1, 5 * 2 and so on.

TEL: 0555-6760112/6760540 FAX: 0555-6769221 Fengteli Blade . 22

封箱机刀片规格尺寸/Sealer Blade Size

◆ 我公司是封箱机刀片规格最大、最专业的封箱机刀片制造厂，常年备有各种规格、型号和封箱机刀片。刀片选用SK5 高速钢HSS制作，刃口采用数控磨齿，刀体使用美国杜邦公司Teflon 涂层，使刀体永不生锈，并在切割胶带过程中保持不粘性，提高切割的缺口效果，增加刀片的使用效率。

◆ Our company is sealing machine blade largest and most professional sealing machine cutter factory, all year round with a variety of specifications, models and sealing machine blades, high speed steel HSS selection SK5 produced using CNC grinding teeth edge cutter body using DuPont Teflon coating, so that the blade will never rust, and remain sticky tape in the process of cutting, cutting the gap to improve effectiveness and increase the efficiency of the blade.



23. 锋特利制刀 销售热线: 0555-6760112/6760540 传真: 0555-6769221

特殊规格异形刀片/Special shaped blade specifications

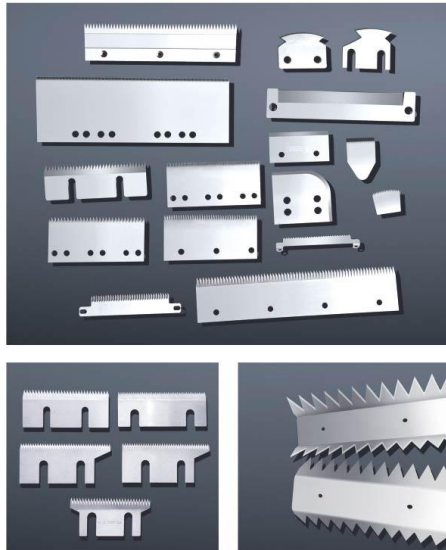
◆ 采用不锈钢、合金工具钢等优质材料制作的各类异形刀具，广泛用于食品、肉类、造纸、无纺布等行业，可来图来样加工。产品有斩拌机刀片、无纺布花刀、方便面袋切刀、火腿切刀等。

◆ Using various shaped tool steel, alloy tool steel and other high quality materials are widely used in food, meat, paper, non-woven fabrics and other industries, plans to sample processing. Products are chopping blade, woven flowers knife, knife bags of instant noodles, ham knife and so on.



TEL: 0555-6760112/6760540 FAX: 0555-6769221 **Fengteli Blade . 24**

隔膜切刀 铜切刀/Diaphragm cutter Copper cutter



板栗去皮机齿刀
Chestnut peeling blade

折弯长齿刀
Bending long tooth blade

25. 锋特利制刀 销售热线: 0555-6760112/6760540 传真: 0555-6769221

包装机齿刀 易撕口刀/Packaging saw blade easy tear knife



◆ 适用于枕式包装机上花边切刀、包装机花刀、直线刀、R下刀、立式包装机切刀、投包机切刀。选用SKH-51高速钢超硬材料，切口更平整，刀片寿命使用更长。

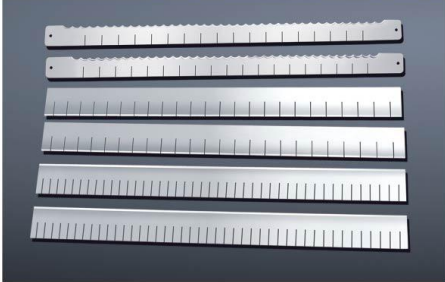
◆ 配套于国内各包装机生产商，替代进口产品，常用规格70*8*4、90*8*4、117*10*4、120*8*4、135*9*3.8、140*10*4、200*14*4、250*25*5等，非标产品可能根据用户要求订制。

◆ Suitable for the pillow packaging machine lace cutter, packing machine flower knife, straight knife, R under the knife, vertical packing machine cutter, cutter chatter vote. Selection of SKH-51 high-speed steel superhard materials, cut more smooth, use a longer blade life.

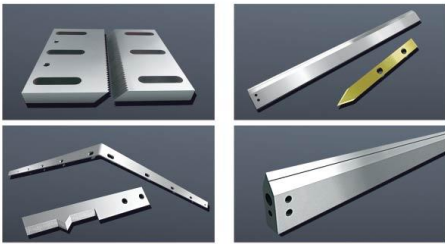
◆ Supporting the domestic packaging machine manufacturer to replace imported products, common specifications 70*8*4, 90*8*4, 117*10*4, 120*8*4, 135*9*3.8, 140*10*4, 200*14*4, 250*25*5, etc., non-standard products may be customized according to user requirements.

TEL: 0555-6760112/6760540 FAX: 0555-6769221 **Fengteli Blade . 26**

豆制品切割方格不锈钢刀片/Bean products cutting stainless blade

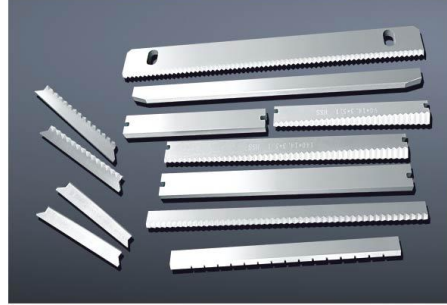


热收缩膜包装机加热切片 L型热切刀/
 Thermal contraction packaging knives



27. 锋特利制刀 销售热线: 0555-6760112/6760540 传真: 0555-6769221

枕式包装机切刀/ Pillow type packing machine cutter

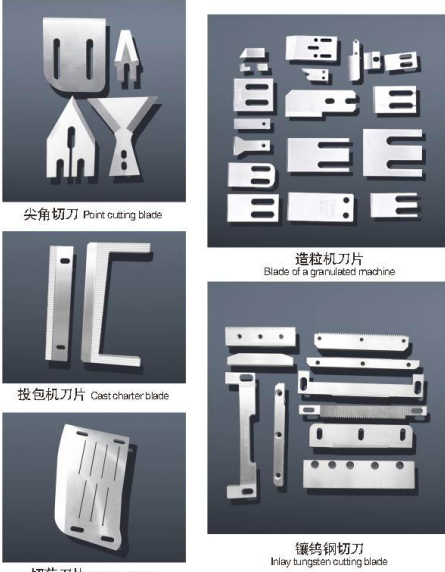


立式-枕式包装机封辊/
 Vertical - Pillow Seal packaging machine rolls



TEL: 0555-6760112/6760540 FAX: 0555-6769221 **Fengteli Blade** . 28

异形-特殊形状包装机刀片/
 Alien - special shape packaging machine blade

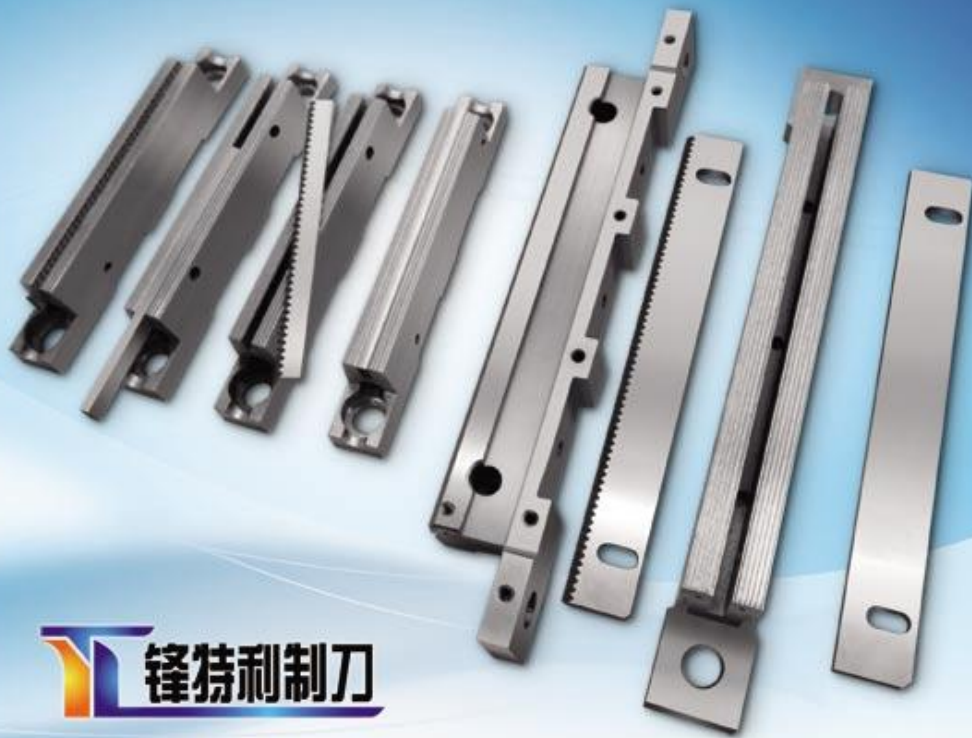


29. 锋特利制刀 销售热线: 0555-6760112/6760540 传真: 0555-6769221

斩拌机-碎肉刀片/ Chopping machine - Chopper blade



TEL: 0555-6760112/6760540 FAX: 0555-6769221 **Fengteli Blade** . 30



锋特利制刀

—— 机械刃模具行业首选伙伴 ——

锋特利机械包装机配件厂专业提供国内外各大厂家枕式、立式包装机配件、封口器、横封辊、纵封辊、切刀、刀座。常年配有各类标准现货及半成品，非标订制产品也可加工订制，交货时间短。封口材料主要采用银打的T10、40Cr及H13来加工，回火处理到粗加工后再调质处理，表面涂膜后光亮如镜，不易生锈。其中H13合金钢特别用在超长的热切刀和加热刀座上，刀体加热后不易变形，可保证刀口在同一直线，封口后的产品整齐、美观。公司可加工孔深长度1500mm，孔径在5mm-20mm。

枕式包装机的花纹刀常采用国产W6的高速钢，热处理硬度达到HRC61-63，常用规格有70×8×4、90×8×4、117×10×4、120×8×4、135×9.9×3.8、140×10×4、163×9.8×5、170×8×4、183×13.8×5、200×14×4、200×24.5×5、250×25×5等。齿内侧面经CBN砂轮磨亮，平面平整度控制在0.01mm之内，齿口锋利、耐磨、标准产品常年备货，非标产品可能根据用户要求订制，交货时间短。

枕式包装机切刀主要适用于各大厂家，如：杭州永创、松川、大川、瑞普华、欧华、达和、易达、瑞达、瑞吉锦泓、诺安顺、金派克、松本、日清、派清、富士达、盛富达、赛尔富、非凡、创先、创宝、宝马、鑫保隆等。



马鞍山市锋特利机械刃模具有限公司
MAANSHAN FENGTELI MECHANICAL BLADE MOULD CO., LTD.

地址：马鞍山博望东城开发区

网址：www.06rmj.com

QQ:466921224

邮箱：yangliu2005@163.com

[Http://www.06rmj.com](http://www.06rmj.com)

上海公司 电话：021-51863884

传真：021-60911015

安徽工厂 电话：0555-6760112 6760540

传真：0555-6769221

锋特利制刀

—— 机械刃模具行业首选伙伴 ——



锋特利包装配件加工厂生产的立式包装机切刀产品可采用SK5高碳钢、420J2或440C马氏体不锈钢及高速钢材料，近年来行业客户内对包装机切刀越来越严格的要求，我公司采用的420J2和440C不锈钢来加工切刀，材料热处理硬度达到HRC54-59,表面抛光处理，可在长时间有水分和腐蚀的环境中保持不生锈，经过高精度磨床及线割加工后再用CBN砂轮磨齿而成，齿刀口锋利、精确度高、调试方便、耐磨耐用，降低客户频繁更换刀片次数，提高包装机整体厂家的制造档次和水平。

立式包装机切刀常用规格：165×55×1.5/2 220×68×1.5/2 240×70×2/2.5 标准齿形为3×3.5或4×4 反面斜坡，切出的V形齿形很明显，易于撕口。公司的切刀适用的各大立式包装机厂家，如佛山创宝、德宝、锦田、弘森、施龙、派克、博汇、晖信包装、中山伙伴、厦门添合、上海达和、奇家、景林等。

由于各包装机生产厂家在不同时段所用切刀及刀座的尺寸有所差异，新老客户有需要时最好提供样品或图纸，以便我们核对，以确保你所订刀的刀片可以更适合安装使用。另外由于不同厂家（即品牌）的尺寸规格及所选材料有差异，价格也稍有区别，具体可联系我们客户或来电咨询，谢谢！

马鞍山市锋特利机械刃模具有限公司
MAANSHAN FENGTALI MECHANICAL BLADE MOLD CO., LTD.

地址：马鞍山博望东城开发区
网址：www.06rmj.com QQ:466921224 邮箱：yanglu2005@163.com

[Http://www.06rmj.com](http://www.06rmj.com)

上海公司 电话：021-51863884 安徽工厂 电话：0555-6760112 6760540
传真：021-60911015 传真：0555-6769221